

# AccuFab-L4D Dental 3D Printer

Lit Up For Dentistry



**SHINING 3D**

Go Digital with SHINING 3D

# AccuFab-L4D

## Large-format Dental 3D Printer

AccuFab-L4D is the latest addition to the SHINING 3D family digital solutions. It is a large-format dental 3D printer developed completely in-house by SHINING 3D to make 3D printing solution more accessible to everyone. It brings users an exceptionally unique printing experience with its features like light-weight, large print size and user-friendly operation.



## Connecting the Future

### Link Aoralscan with AccuFab

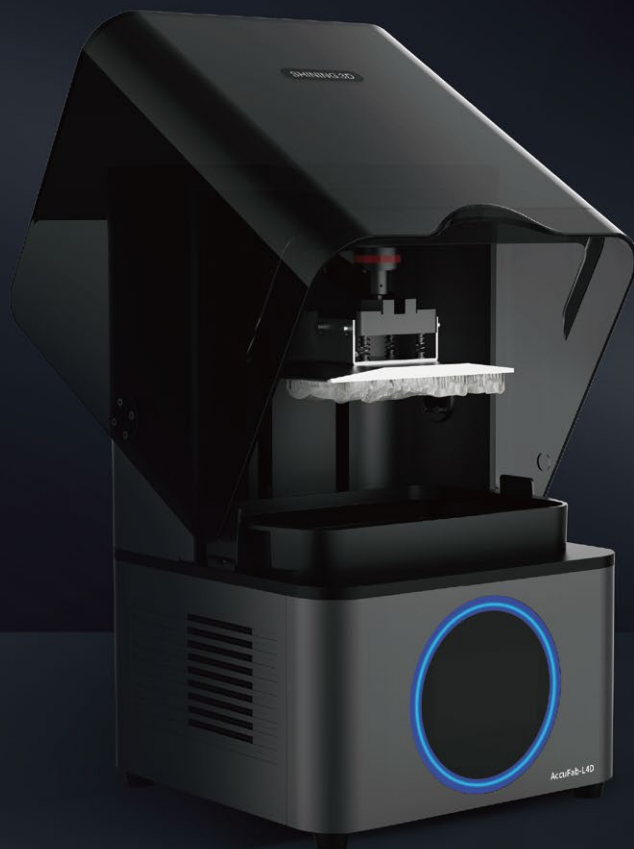
Shining 3D intraoral scanner, 3D printer and dental material ecosystem provides exceptional experience in digital dentistry.

### AccuDesign

Life-time free upgrade model creator software that comes with AccuFab-L4D.

### Dental Cloud

SHINING 3D's cloud data platform enables data transmission, making it convenient for data transfer and communication between clinics and dental labs.





# Unparalleled Accuracy

## Accurate Precise

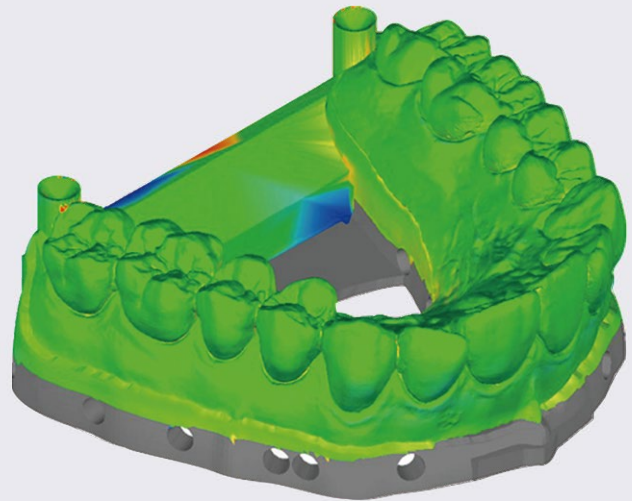
Over 96% of the surface points fits within  $\pm 0.1\text{mm}$

## Outstanding Uniformity

High luminance uniformity achieves up to 90%

## Beyond the Limits

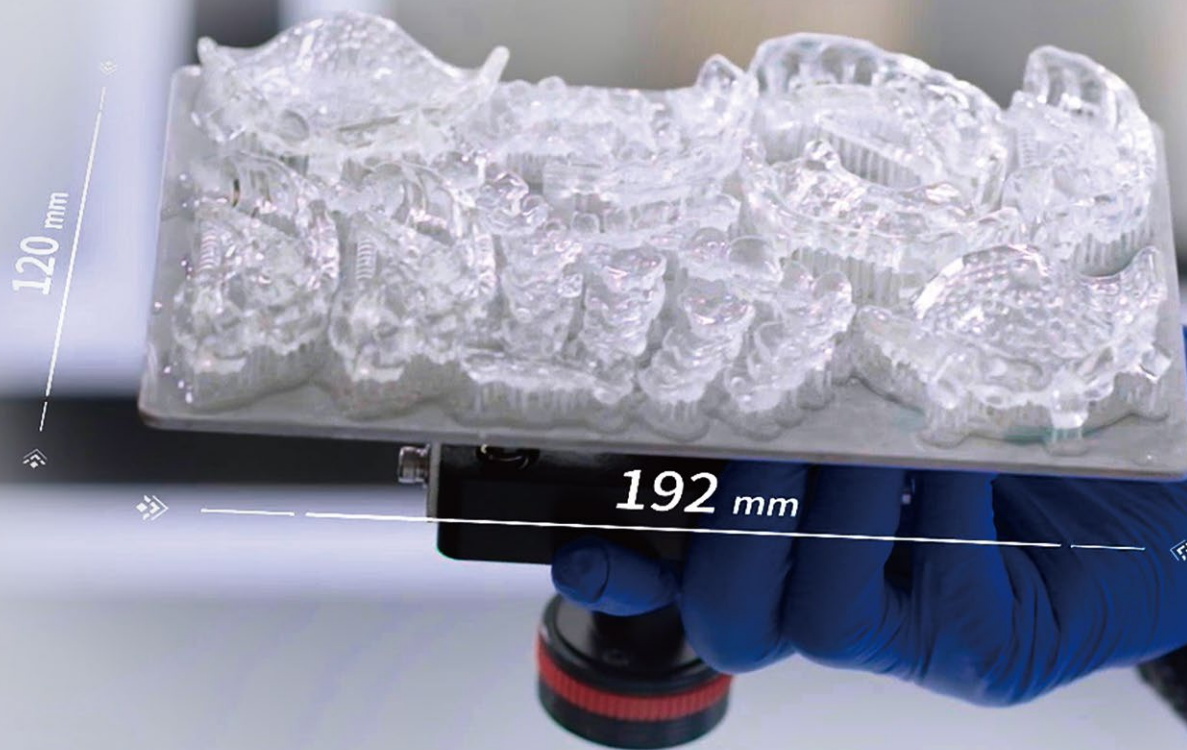
Provides not only the possibility to obtain features smaller than a pixel, but also superior surface finish.



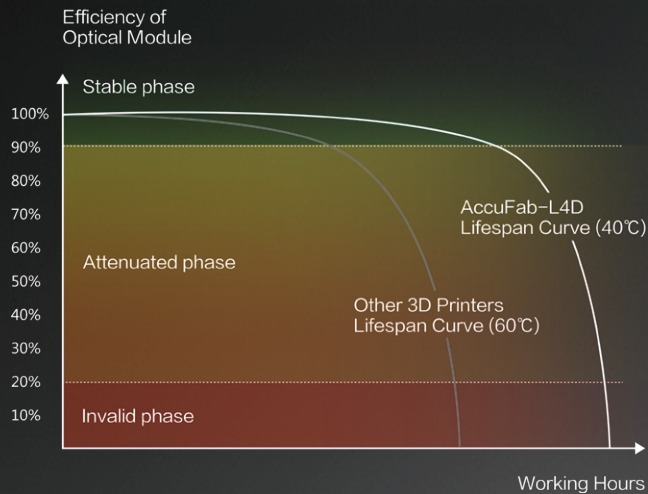


## Large Print Size, 4K Resolution

192\*120mm printing size and 4K resolution satisfy the demands of users for efficiency and details.







# Reliable Performance

## Industrial Grade Optical

High quality optical module with long-life components

## State-of-the-Art Robustness

AccuFab-L4D's 5 million layers tested in real dental clinic condition provides state-of-the-art reliability.

## District Cooling System

DCS (District cooling system) maintains the temperature of working screen under 40°C, while extending the 3D printer lifespan significantly.

# Professional Dental Software

## Plug and Play

Guided interactive operation provides gentle learning curve

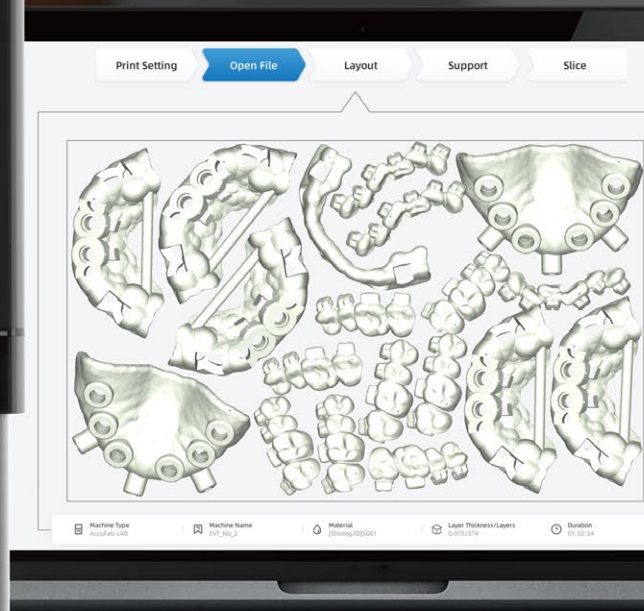
## Free Updates

Push update of software and material packages

## Accuracy Calibration Wizard

Step by step guide for accuracy calibration







# Multiple Material Options

## Shining Dent

Shining Dent covers a wide range of materials for dental 3D printing applications, includes dental model, ortho model, surgical guide, castable wax and gingiva mask.

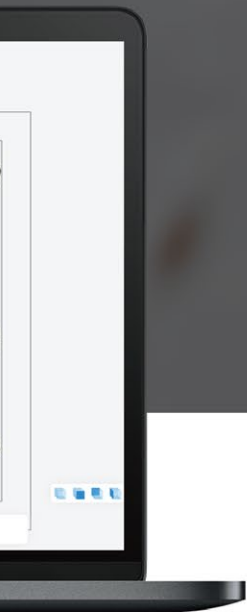
## Certified 3<sup>rd</sup> Party Material

Shining 3D partners with industry leading brands in dental material, providing more possibility and flexibility.

keyprint®  
by keystone industries



pro3dure  
medical



# TECHNICAL SPECIFICATIONS

## AccuFab-L4D

Printer Size	360 x 360 x 530 mm
Printer Weight	about 19 kg
Print Volume (x/y/z)	192 x 120 x 180 mm
Resolution	3840 x 2400(4K) Px
Print Speed	10-50 mm/h ( depends on layer thickness and materials )
Layer Thickness	0.025/0.05/0.075/0.1 mm
Accuracy	± 50 μm
Connectivity	USB/Wi-Fi/Ethernet

\*Notice: SHINING 3D reserves the right to introduce modifications or alterations to any of the specifications and images used in this document.